

### **A warning about using chart plotters at the SW Sunk swatchway at the present time:**

Our 2026 survey showed that the swatchway has moved significantly, especially compared to 2024. The new chartlet is posted up on the noticeboard and can be downloaded FREE at: <https://www.crossingthethamesestuary.com/page29.html>. Because of the move, it is important to provide some additional information relevant to using a chart plotter, or indeed a current paper chart.

All current echarts (e.g. such as Navionics, C-Map, Savvy-Navvy etc) and paper charts are based on the UK Hydrographic Office Standard National Charts (SNC). Relevant is Chart 1975 – Thames Estuary, Northern Part – current edition 32, dated 20<sup>th</sup> March, 2025 but note that the Source data shows that the swatchway was drawn based upon **2024 data**. It is probable that as the changes there between 2024 and 2025 were not large, with a SNC with a scale of 1 to 50,000, the changes were not significant.

The chartlet is drawn at the scale of 1 to 1,850, and consequently the changes in 2026 are very obvious. If you want to see a little more about how that swatchway moves, have a look at: <https://www.youtube.com/watch?v=9aAbBNH2lwA>.

### **Beware of using a chart plotter with respect to the swatchway without considering the latest data.**

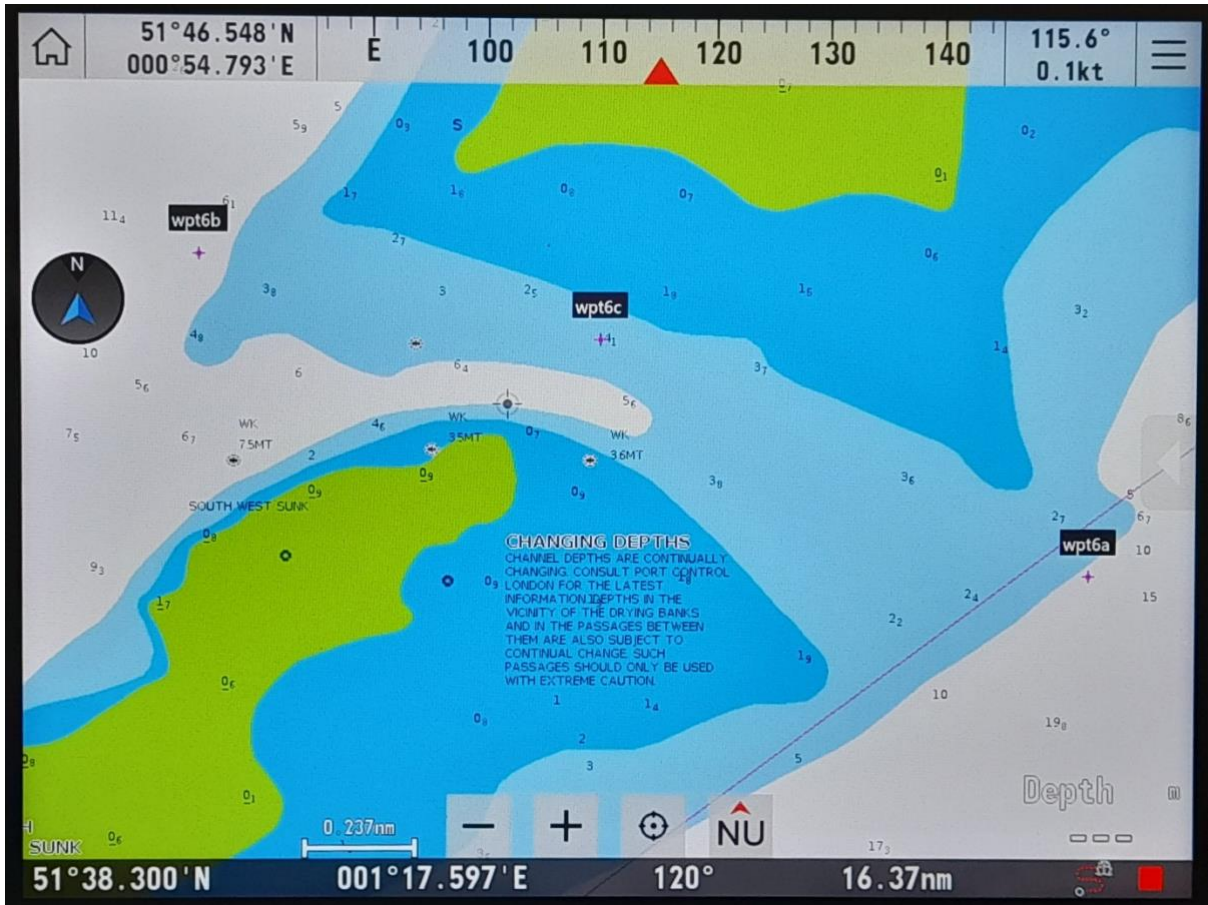
It is appreciated that it is counter-intuitive to say, ‘don’t follow the centre of the deepest water’ but that is the case at the moment.

The image below is using the latest Navionics echart (dated 29<sup>th</sup> June, 2026). The swatchway is drawn based on the 2024 data which correctly follows the UKHO latest SNC. The data has been sent to the UKHO and the Port of London Authority but logistics come into play. They must consider the validity of the data and if they consider it, they will have to consider whether or what changes are necessary against their burden of work of handling world data and priorities. Typically, the UKHO has amended SNC based on our data within a few weeks. Only then can echart makers follow suit.

I think it important to consider using what is effectively an out of date echart. The echart makers are not criticised; it is jootts (just one of those things). Logistics can grind slowly.

The image below shows the 2024 contours BUT displays the **recommended 2026 waypoints**. You will see ‘wpt 6c’, the central waypoint, is well north of the displayed (2024) deepest water. Consider the new CTTE chartlet on the noticeboard or download: you will see the central waypoint is at the north side of the deepest water. That is the measure of the movement over the winter. Also, the cursor on the image is placed on the line of latitude which is 51°38’300N, 001°17’597E (see bottom of the screen for the cursor position). This marks a drying height of 0.05m from the survey; a further measurement of the movement. In other words, where the cursor is positioned today you will find the edge of the drying area. If the echart is not current i.e. based on pre-2024 data, the situation would be worst.

Follow the recommended 2026 waypoints and ignore the natural instinct to follow the image.



New waypoints recommended are:

- East side (CTTE wpt 6a) - 51°37'950N, 001°19'500E
- Centre (CTTE wpt 6c) - 51°38'430N, 001°17'900E
- West side (CTTE wpt 6b) - 51°38'600N, 001°16'600E