

MARINE NOTICE

Notice to all Shipowners, Fishing Vessel Owners, Agents, Shipmasters, Skippers, Fishers, Yachtsmen and Seafarers

NeuConnect Interconnector UK Post Lay Cable Burial and Protection

Date of Issue: 06/07/2026
Revision: 09

Project Overview

NeuConnect is a new high voltage direct current (HVDC) electricity transmission interconnector between the Isle of Grain, Kent, mainland UK, and Wilhelmshaven, Germany, routed through UK territorial waters (TW) and exclusive economic zone (EEZ). Prysmian Power Link (PPL) has been contracted to install the submarine cable. The proposed cable route in UK waters is shown in the Figure 1 below.

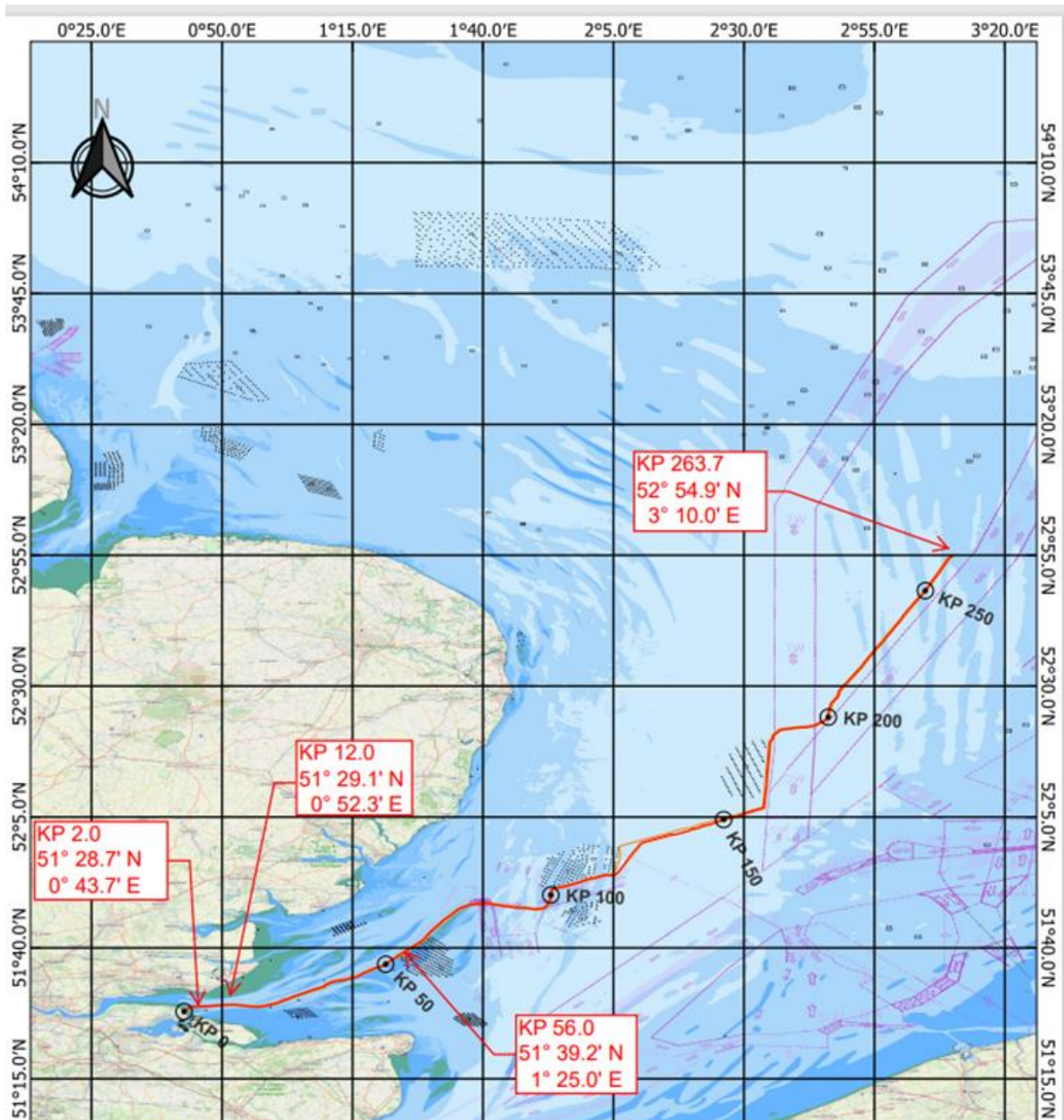


Figure 1 NeuConnect cable route (UK)

Notice of Activity

Mariners are advised that post-lay burial cable protection works are due to commence along the NeuConnect UK cable route. Works will be conducted by Prysmian PowerLink and supported by their subcontractors.

Post-lay burial cable protection works will be undertaken at cable joints and any locations where the cable is not at the desired cable burial depth, using a jetting tool on board a trenching support vessel. Where this does not achieve the required burial depth, a Controlled Flow Excavator (CFE) will be used. The precise location where post-lay burial is required will be dependent on data from accompanying survey activity, which will be ongoing throughout the works.

Post lay burial protection operations will take place between the following locations set out in **Table 1**, commencing from 2nd May 2026 Dates are subject to change due to weather or operational requirements.

Post-lay cable protection locations for cable crossings are detailed in **Table 2**. Cable protection activities through mattress installation and remedial burial will be carried out by two vessels (C-installer and Genesis), which will take place for from 2nd May 2026 (C-installer) and the works from the Genesis will begin from 4th May 2026. These works are likely to take place until 30th July 2026. Dates are subject to change due to weather or operational requirements.

Post lay burial protection and survey works are still being undertaken in Campaign 2 (C2) and C3. C3 PLB works have an anticipated completion date of July 24th 2026 (**Table 1**). Dates are subject to change due to weather or operational requirements.

Table 1 : Estimated schedule of NeuConnect post lay protection operations in the UK

Activity	Location Start KP	Location End KP	Commencement	Anticipated completion
Remedial Burial works C1 and C2	2*	199*	15 th September 2025	Ongoing 2026
Remedial Burial works at KP16-KP18	16*	17*		Ongoing 2026
Remedial Burial works at C3	200*	EEZ	11 th June 2026	24 th July 2026
Post-Works Survey*	12*	EEZ	As required, during and upon completion	Ongoing 2026

* Location and timing dependent on results of cable installation burial depth survey.

Table 2: Where crossing points for post lay protection have been installed

Crossing	Location (KP)	Easting (m)	Northing (m)	Latitude (DDM)	Longitude (DDM)
Concerto 1 North	185.014	472314.50	5798706.23	52°20.2778'N	002°35.6190'E
Bacton-Zeebrugge	151.679	462802.44	5770127.23	52°04.8281'N	002°27.4311'E
Concerto 1 South	131.362	444468.99	5762055.26	52°00.3820'N	002°11.4591'E
Farland North	127.117	441817.65	5758996.72	51°58.7159'N	002°09.1729'E
Atlantic Crossing 1 Segment B1	115.110	435279.72	5750159.69	51°53.9059'N	002°03.5621'E
Galloper 3	111.877	432304.82	5748974.21	51°53.2453'N	002°00.9822'E
Galloper 2	111.766	432194.09	5748965.96	51°53.2400'N	002°00.8858'E
Galloper 1	111.712	432140.17	5748961.94	51°53.2375'N	002°00.8388'E

Crossing	Location (KP)	Easting (m)	Northing (m)	Latitude (DDM)	Longitude (DDM)
Greater Gabbard	104.581	425685.58	5746115.98	51°51.6530'N	001°55.2498'E

The planned operations will be conducted by the following vessels (**Table 3**):

- C-Installer; and
- OSV Genesis

Table 3: Details of vessels undertaking the works

Vessel Name	Vessel Master	Vessel Type	Vessel IMO No.	Vessel Owner:	Call Sign	MMSI No.
C-Installer	TBC	Trenching Support Vessel (TSV)	9165554	JD Contractor A/S	OUPP2	219031822
OSV Genesis		Offshore ROV and Support Vessel	9243370	tbc	EAVG	224546000

Guard Vessels are planned to patrol the route sections where the cable is exposed (cable crossings) or at inadequate burial depth until cable protection works are completed.

Vessels will shelter in Port of Sheerness in the event of weather downtime.

Table 4: Details of guard vessels supporting the works

Vessel Name	Vessel Master	Vessel Type	Vessel IMO No.	Vessel Owner:	Call Sign	MMSI No.
C1						
Devotion	tbc	Fishing Boat	N/A	Nigel Stead	MRVQ7	235002330
SEIONT A	Matt Barnes	Fishing Boat	N/A	Matt Barnes	MWHL	235001428
C2						
Devotion	tbc	Fishing Boat	N/A	Nigel Stead	MRVQ7	235002330
Northern Viking	Martin West	Fishing Boat	9099509	KEARNEY TRAWLERS	2AXT5	235063795
GV Northern Venture	Liam McBurney	Fishing Boat	N/A	TBC	2CXS3	235076636
Inge	Syhlani Syahlani	Fishing Boat	9866433	TBC	T7AM8	268242400
Benaiah IV	Michael Connaghan	Fishing Boat	8965622	DR Maritime	ZNQH2	235002718
Flamingo	Aurelian Leonte	Fishing Boat	6911861	Flamingo Shipping Ltd	T7CN8	268255702
Isla B	Joseph Malinda	Fishing Boat	5392555	Barnes Offshore Ltd	MNVM2	232007860
Ardent	David Marr	Fishing Boat	7922893	Blue Water 500	GCFK	235003330
C3						
Northern Viking	Martin West	Fishing Boat	9099509	KEARNEY TRAWLERS	2AXT5	235063795
GV Northern Venture	Liam McBurney	Fishing Boat	N/A	TBC	2CXS3	235076636
Inge	Syhlani Syahlani	Fishing Boat	9866433	TBC	T7AM8	268242400
Sharon Vale	KAHANDAGE LUCIAN	Fishing Boat	8604216	Atlantic Trawlers	GHQL	233098000
Aquarius	Iwaszkiewicz Wojciech	Fishing Boat	8862636	Van Laar	T7AE8	268236702

Vessel Name	Vessel Master	Vessel Type	Vessel IMO No.	Vessel Owner:	Call Sign	MMSI No.
Flamingo	Aurelian Leonte	Fishing Boat	6911861	Flamingo Shipping Ltd	T7CN8	268255702

General Safety Advice

Mariners are reminded to navigate with caution and keep a continuous watch on VHF Ch 70 / 16 when navigating in and around the operational areas. Port of London VHF working channel is Ch. 69. Port of Medway VHF working channel is Ch.74. Sunk VTS VHF working channel is Ch. 14.

All vessels involved in operational activities will exhibit appropriate lights and day-time shapes prescribed by the International Regulations for Preventing Collisions at Sea, relative to operations. Vessels will also transmit an Automatic Identification System (AIS) message.

Safety Zones

During the works a 'rolling' 500m safety zone will be applied around all installation vessels and activities. Safety zones in the PLA area are subject to variation via PLA NtM, and may be less than 500m where agreed.

Contact Details

Enquiries regarding the contents of this Marine Notice, or any other matters, should be directed to project staff. Contact details are in the Table below.

Role	Name	Contact Details
SHEQ Representative	Sebastiano Scalisi	M: +39 366 67 42 107 @: sebastiano.scalisi@prysmian.com
Offshore Project Manager (Prysmian PowerLink)	Loretta Toma	M: +39 345 9733068 @: loretta.toma@prysmian.com
Fisheries Liaison Officer	Merlin Jackson	M: +44 7989 520484 @: merlinjackson@btinternet.com